

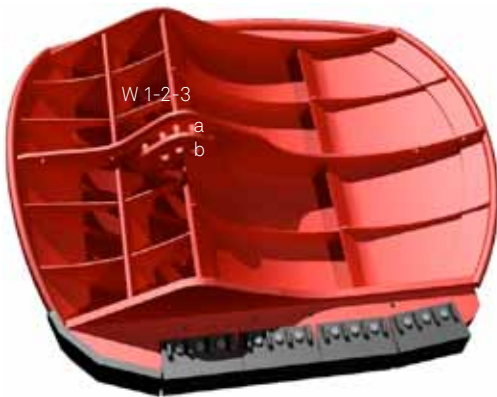
## Injector Door Ltd.

Eystein Elttør

Tel.: +298 28 06 06

Mail: ee@injector-door.eu

Web: www.injector-door.eu



- W: Main wire connection
- a-b: Upper and lower towing point
- B: Middle chain connection on back
- C: Upper & lower chain connection on back

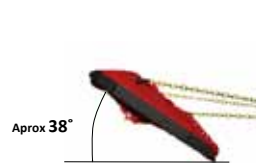
Increase spread (AOA): Connect to a higher no. in point W and/or in point B  
 Decrease spread (AOA): Connect to a lower no. in point W and/or in point B

Tilt door inwards: If the doors tend to fall on back, the lower chain should be shorten in point C  
 Tilt door outwards: If the doors tends to fall on wire side, the upper chain should be shorten in point C

### IMPORTANT – DO IT LINK BY LINK

Tilt door outwards: If the doors tend to tilt inwards in shallow waters fishing, move shackle in towing point b

Chain lengths: Chain lengths are from attachment point on door (including shackle) to the connection ring



### SUGGESTED STARTING POINT: MEDIUM AOA SETTINGS

- W 2a: Main wire connection
- B 2: Middle chain connection
- C: Upper and Lower chain connection



### DECREASE AOA: MINIMUM AOA SETTINGS

- W 1a: Main wire connection
- B 1: Middle chain connection
- C: Upper and Lower chain connection



### INCREASE AOA: MAXIMUM AOA SETTINGS

- W 3a: Main wire connection
- B 3: Middle chain connection
- C: Upper and Lower chain connection