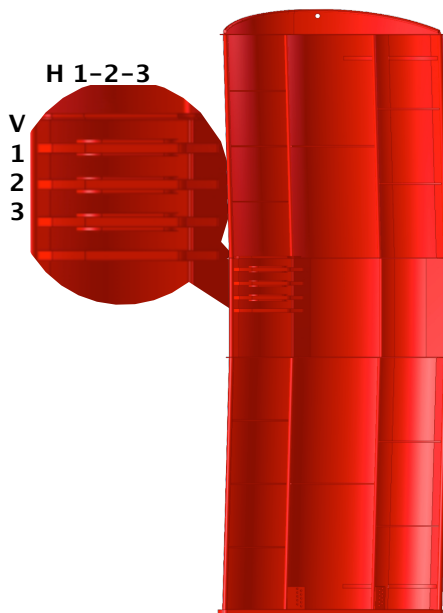


### Injector Door Ltd.

Eystein Elttør  
 Tel.: +298 28 06 06  
 Mail: ee@injector-door.eu  
 Web: www.injector-door.eu

Frontside



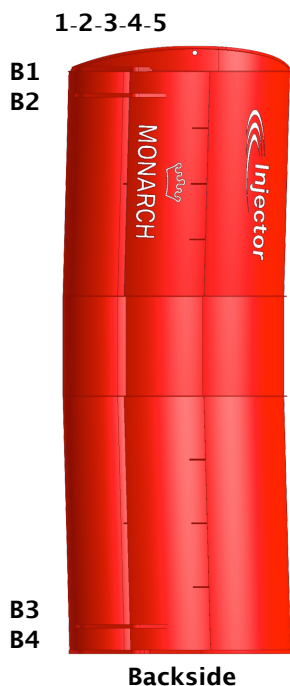
### Injector Monarch Manual

H 1-2-3: Main horizontal wire AOA adjustments  
 V 1-2-3: The 3 vertical towing pint point on wire side  
 B1/B2: Top backstop adjustments  
 B3/B4: Bottom backstop adjustments

Increase AOA: Connect to a higher no. in point **H** and/or in point **B**  
 Reduce AOA: Connect to a lower no. in point **H** and/or in point **B**  
 (Note: it is **NOT** advised to use horizontal hole 1 in point **B** on back together with minimum AOA on front in point **H1**)

Tilt door inwards: Connect to B1 and B3 or/and V1  
 Tilt door outwards: Connect to B2 and B4 or/and V3

Tilt door forwards: Bottom backstop (B3/B4) to a higher No. or/and top backstop (B1/B2) to a lower No.  
 Tilt door backwards: Top backstop (B1/B2) to a higher No. or/and bottom backstop (B3/B4) to a lower No.



### NEUTRAL SETTINGS

Main wire connection in H2 and V2  
 Top backstop connection in B1:3  
 Bottom backstop connection in B4:3

### MINIMUM SETTINGS

Main wire connection in H1 and V2  
 Top backstop connection in B1:2  
 Bottom backstop connection in B4:2

### MAXIMUM SETTINGS

Main wire connection H3 and V2  
 Top backstop connection B1:5  
 Bottom backstop connection B4:5

### TILT DOOR FORWARD (example)

B1/B2 in 1 & B3/B4 in 5

### TILT DOOR BACKWARD (example)

B1/B2 in 5 & B3/B4 in 1