

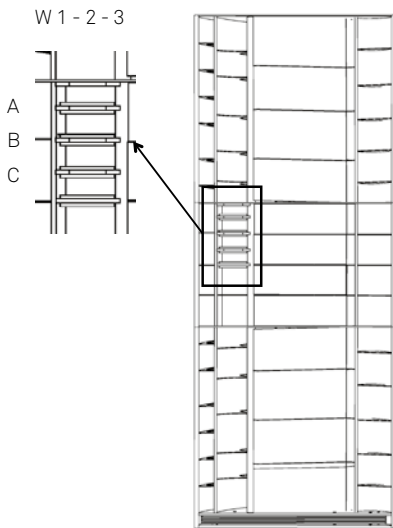
### Injector Door Ltd.

Eystein Elttør

Tel.: +298 28 06 06

Mail: ee@injector-door.eu

Web: www.injector-door.eu



W: Main wire connection

UB1 – UB2: Upper backstop connection

LB1 – LB2 – LB3: Lowerbackstop connection

To increase spread (AOA): Connect to a higher No.

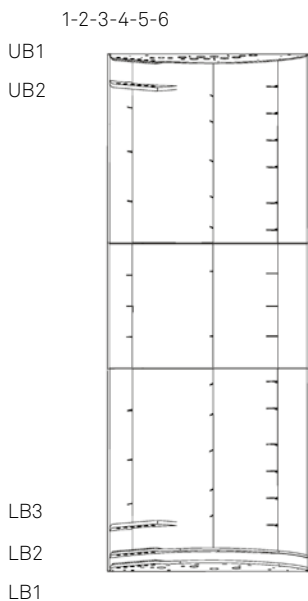
To reduce spread (AOA): Connect to a lower No.

Tilt door inwards: UB1 and LB3 or LB2

Tilt door outwards: UB2 and LB2 or LB3

Tilt door forward: Lower backstop to a higher No. and/or Upper backstop to a lower No.

Tilt door backwards: Upper backstop to a higher No. and/or Lower backstop to a lower No.



### NEUTRAL SETTING

W 2B: Main wire connection

UB1:4: Upper backstop connection

LB1:4: Lower backstop connection



### TILT DOOR FORWARD SETTING

W 2B: Main wire connection

UB1:3:LB: Upper backstop connection to a lower No.

1:5: Lower backstop connection to a higher No.



### TILT DOOR BACKWARD SETTING

W 2B: Main wire connection

UB1:5: Upper backstop connection to a higher No.

LB1:3: Lower backstop connection to a lower No.